

# L'OUSTAU de la FONT

HÔTEL ★★★ RESTAURANT BAR À VINS



## A Warm Welcome...

From the aromatic lavender fields and unspoiled villages to the fishing harbours and the coastline of the Côte d'Azur, this region is one of the most popular in the south of France.

For many the Drôme is the 'real Provence' a region brought to the fore by its famous patron, Peter Mayle and his bestseller, "A Year in Provence". The Drôme has been well preserved over the ages and prides itself on its historical heritage of castles, roman ruins and stunning hilltop villages, Reilhanette being one of these.

Reilhanette is a small medieval village with 120 residents, offering magnificent views of the Mont Ventoux and Montbrun-les-Bains. L'Oustau de la Font is situated within this medieval village and shares breathtaking views. L'Oustau de la Font is a small hotel, owned by 2 professionals, Jean-Michel Valery and Ludovic Monier, who can assure you a comfortable and relaxing stay.



twitter



LE VILLAGE  
26570 REILHANETTE

04.75.28.83.77

[info@oustaudelafont.com](mailto:info@oustaudelafont.com)  
[www.oustaudelafont.com](http://www.oustaudelafont.com)

S.A.R.L. L'Oustau de la Font au Capital de 7500 €  
Siret : 481 697 449 00017

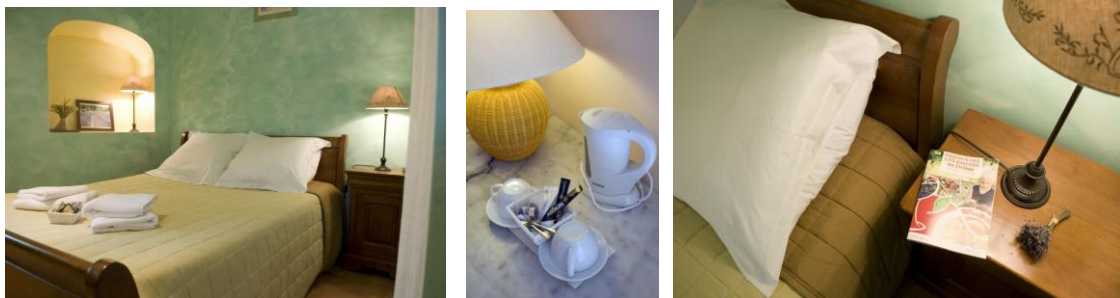
# L'OUSTAU de la FONT

HÔTEL ★★★ RESTAURANT BAR À VINS

## Comfortable Rooms...

We have a total of 6 comfortably furnished bedrooms, all with their own bathrooms.

Alternatively, we have a Maisonette with its own fitted kitchen. Secluded from the hotel, it has a double bedroom with a large terrace and big bathroom, with a good size triangular bathtub.

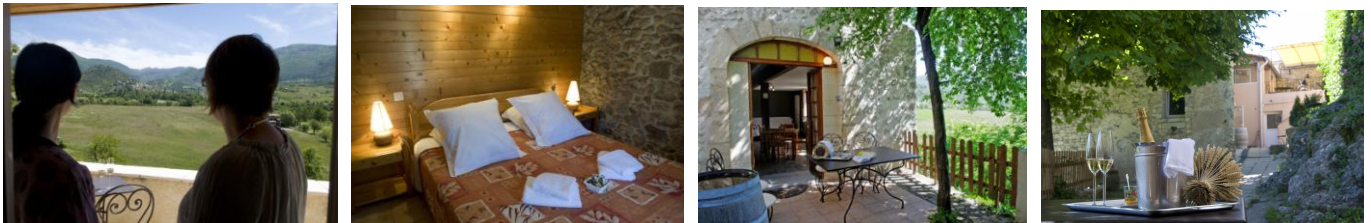


- ROOM 1 -

All rooms can be rented weekly or on a nightly half board basis and we accept all major credit cards.

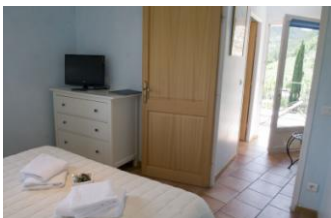
Pets are welcome in the hotel, at a small charge of 15 € per stay.

Room N° 2 also has its' own private lounge and terrace, with panoramic views of the beautiful surrounding countryside



-MAISONNETTE -

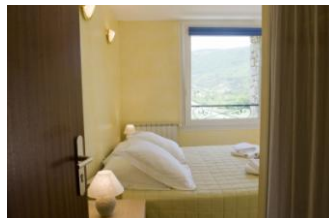
-ROOM 2 -



-ROOM 3 -



-ROOM 4 -



-ROOM 5-



LE VILLAGE  
26570 REILHANETTE

04.75.28.83.77

[info@oustaudelafont.com](mailto:info@oustaudelafont.com)  
[www.oustaudelafont.com](http://www.oustaudelafont.com)

S.A.R.L. L'Oustau de la Font au Capital de 7500 €  
Siret : 481 697 449 00017

## The Restaurant - Local Ingredients, Uniquely Prepared...



Ludovic Monier prides himself on using only the very best local ingredients, to create regional specialities as well as modern dishes. When it is cold, meals are served in front of the fireplace indoors or you can dine on our terrace, when the weather is good.  
Please note, it is advisable to reserve your table well in advance during the high season.



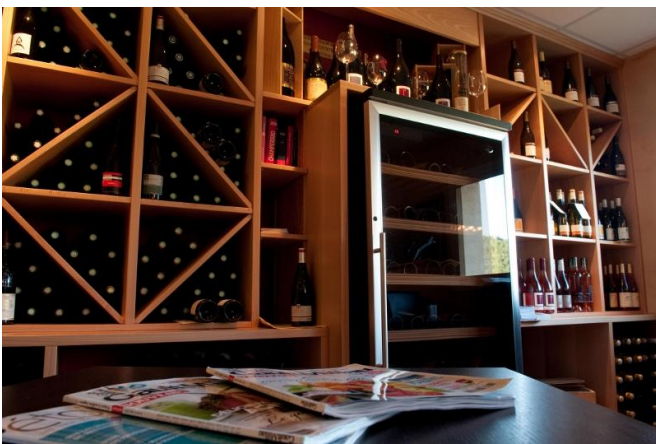
# L'OUSTAU de la FONT

HÔTEL ★★★ RESTAURANT BAR À VINS

## The Wine Bar

## Enjoy Fine Wines or Take Some Home...

Enjoy an aperitif in our bar or on the terrace. We offer a large selection of wines from the Côtes-du-Rhône region by the glass. With panoramic views our bar is just the place to enjoy an espresso or a fine wine, giving you the opportunity to mix within the small community of Reilhanette, or to just sit back and relax.



In our Boutique, you can buy the best wines and specialty foods from the area, at affordable take-away prices.



LE VILLAGE  
26570 REILHANETTE

04.75.28.83.77

[info@oustaudelafont.com](mailto:info@oustaudelafont.com)  
[www.oustaudelafont.com](http://www.oustaudelafont.com)

S.A.R.L. L'Oustau de la Font au Capital de 7500 €  
Siret : 481 697 449 00017

## Spa Treatment and Massages - Relax and Enjoy...

L'Oustau de la Font Jacuzzi is situated in a room on our back terrace, accessible to all of our guests.



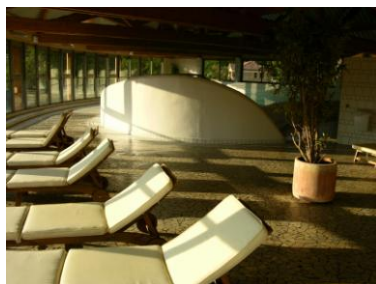
- Our Spa -

Also, on our premises, we offer a selection of massages.



Since 2006, L'Oustau de la Font has worked in collaboration with the spa in Montbrun les Bains, only 1 mile from our hotel. Do not hesitate to go and discover this wonderful place.

We offer various packages.



*Ask Reception for further information.*

LE VILLAGE  
26570 REILHANETTE

04.75.28.83.77

[info@oustaudelafont.com](mailto:info@oustaudelafont.com)  
[www.oustaudelafont.com](http://www.oustaudelafont.com)

S.A.R.L. L'Oustau de la Font au Capital de 7500 €  
Siret : 481 697 449 00017